

● SOLENI ●

DIVE CENTRE



SONEVA JANI
REP. OF MALDIVES

Soleni Dive Centre Handbook



Soneva



Soneva Jani Maldives

An imaginative journey that began over two decades ago, the Soneva story continues with Soneva Jani, inspired by a word that means 'wisdom' in Sanskrit.

The highlight of the islands, that the resort calls home, is the 5.6 kilometre private lagoon that surrounds it; an azure spectacle that inspires a sense of calm.

Noonu Atoll is known for housing the highest density of swarming fishes which can be found in the Maldives, especially Fusiliers and Snappers with the privileged presence of a huge spinner dolphin population.

The underwater world is also renowned for scuba diving with dive sites such as Orimas Thila, a shark point for grey reef sharks and Christmas Tree Rock (Vavathi Kurohli Thila) which is famous for its abundant vibrant soft coral life.

Soneva Jani is definitely the place to mesmerize you with its amazing colour display around its unspoiled lagoon.

Diving the Indian Ocean

Well known globally as one of the World's most exquisite scuba diving destinations, the Maldives are offering an impressive choice of dive sites encompassing some of the best diving on our Planet.

Take the plunge in the Indian Ocean and get surprised and amazed. Discover **Thilas** or **Giris**, these underwater mountains populated by shoals of Oriental Sweet lips, Banner fish or Fusiliers and home to a wide range of colourful soft and hard corals. Jump in a **Kandu** and let the current embark you in one of these channels surrounded by Sharks, Rays and Tunas. Be stunned by the visit of a Sailfish, a Manta passing by or a Whale shark cruising in the current. Take a relaxing drift along a **Beyru**, one of these outside reef colonized with a vibrant marine life.



Soneva Jani Diving School

Operated by **Soleni Private Limited Maldives**, the Dive Centre is equipped with Branded, well-maintained equipment and a modern filling station to meet the needs of all Scuba Divers.

It is managed to the highest standard of safety, with fun and friendliness in mind. **Soleni Dive Centre** is a fully accredited organisation operating 2 outlets in the Maldives. They offer a multi-lingual friendly Team of instructors to care for Soneva Jani international clientele.

The Soleni Dive Centre

The Soleni Dive Centre opened on Soneva Fushi in October 1995. Until December 1998, it was the only diving school operating in the Baa Atoll. Thomas Waelchli and Elisabetta Benini have had a long experience teaching diving in the Maldives before deciding that Soneva Fushi was the Island.

The Soleni Dive Centre on Soneva Jani opened in November 2016.

The philosophy is to give special attention to all divers, whether they are experience or beginners. The diving groups are kept small and instructors go beyond the normal supervisory line of duty, sharing with you their enthusiasm for diving.

First Underwater Bubbles

Scuba diving is for the **WHOLE FAMILY... Fun, thrills and education under one roof**. You will find Scuba Diving irresistible. If you want to meet a turtle, fancy getting acquainted with an octopus or greet Nemo, ...Then, come to meet our friendly team at the Dive Centre. Start today and let the adventure begin.



Refresher Diver

Scuba Divers of all levels that have not been diving for a while will be invited to participate in a refresher dive composed of a skill refresh in the lagoon, followed by a dive in the Ocean.

A refresher dive is NOT a test, but a dive in shallow water under quiet, controlled circumstances, where the diver is given the opportunity to regain confidence in his/her skills, including but not limited to:

- Mask clearing
- Regulator recovery
- Neutral buoyancy
- Equalizing
- Ascents / descents
- Alternate air source breathing

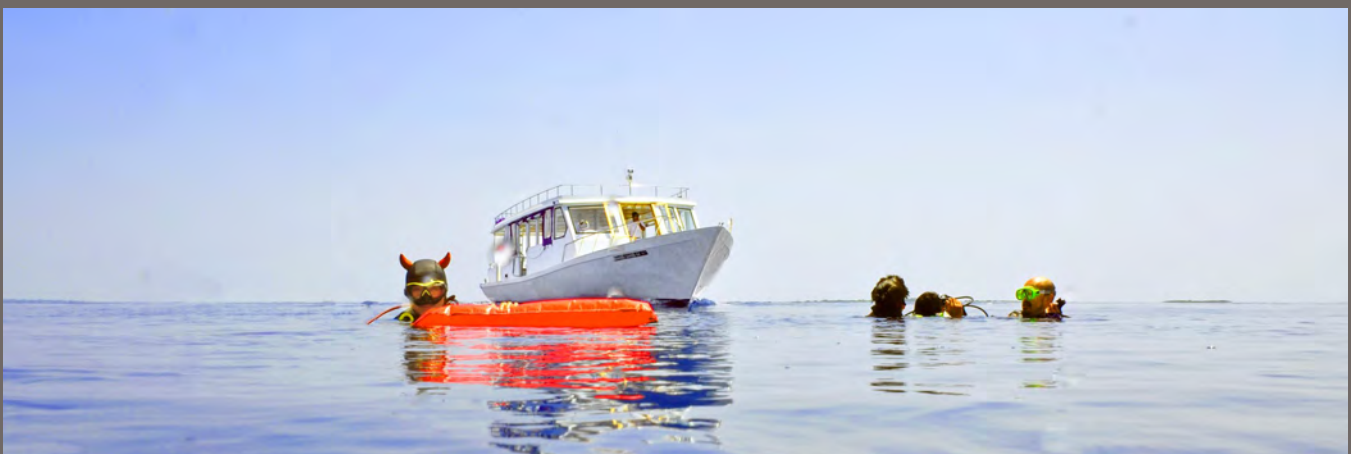
Please bring your Logbook, your Certification(s) and a Medical Statement if available

Private instructor can be arrange upon request

Boat Schedule

Our daily dive schedule is very flexible. As a certified diver, once you have registered, you are invited to let any of the dive centre instructors know your wishes and they will be pleased to add you on the boat list or organise a private boat trip for your outing

Private boat can be arranged on requests



PADI Dive Courses

Bubble Maker (1 Water session)

Experiment the Underwater World from **age 8**, in direct supervision with an instructor. Get a small tank on your back to start exploring the Ocean (Confine Water) to a maximum depth of 2 metres and become our next Divers' generation.



PADI Discover Scuba Diving (1 in-water lesson & 1 Open Water dive)

From age 10, the Underwater World is yours... Take this ½ day course and dive to a maximum of 12 metres under the direct supervision of an instructor.

PADI Scuba Divers Certification (3 in-water lessons & 2 Open Water dives)

Holidays are always too short... If you have too little time to do your Open Water certification ...then, this is for you!

A 2 to 3 days course to gain a **certification** that will enable you to dive to a depth of 12 metres alongside a dive professional.

This course will be credited toward your Open Water Diver Certification.

PADI Open Water Certification (5 in-water lessons & 4 Open Water dives)

Reach underwater autonomy with the PADI Open Water Course. This is a 4 to 5 days course allowing you to dive the World over, opening doors to everlasting adventures.

PADI Advanced Open Water & Specialty Certifications

This is the ideal way to gain hands-on experience in different scuba diving areas and improve on your skills under the direct supervision of an instructor.

All PADI Certifications are recognized and valid Worldwide

Soneva Jani Diving Facts

Water Temperature

28° Celsius to 29° Celsius

Air Temperature

30° Celsius to 35° Celsius

Underwater Visibility

15 to 40 Metres (45 to 120 Feet)

Max. Diving Depth

30 Metres

Type of Diving

Reef diving

Thila diving (independent coral formation not reaching the surface)

Giri diving (independent coral formation reaching the surface)

Drift diving

Night diving

When to Go

All year round

From May to Nov.

Western Monsoon brings plankton to our region, attracting an impressive array of spectacular life forms.

From Dec. to Apr.

This is the time to rest for Mother Nature and offer us a world of peace and harmony with crystal waters that will let you enjoy the brightness of the coral life. It is also when drift diving is at its best with shark season for the divers and mating season for the sharks.



Main Dive Sites



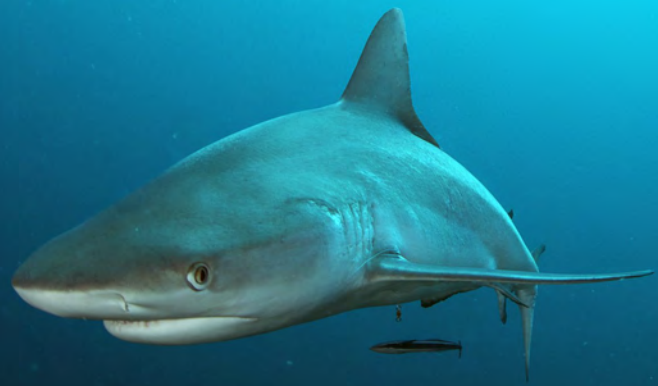
Orimas Thila

This is a good medium size Thila composed of two humps that is a must see for divers visiting Noonu Atoll.

After a 20 metres descent in the blue water, you will reach the top of Orimas Thila. The local hosts, the grey reef sharks may be waiting for you with some eagle rays flying around. Once you have reach the Thila, you will discover several overhangs on the western side with sharks and eagle rays roaming around. You may be lucky and witness a shark coming at a 45 degree angle, mouth wide opened, literally stopping for a few second to get their gills cleaned by some wrasse.

This diving site is accessible throughout the year. It is quite deep and requires a fast descent, so divers will need to have experience at 20-30 m and be used to fast descents, nitrox recommended.

These cleaning stations are vital for sharks. It is mandatory to respect the site and not to disturb the animals in order to preserve the species.



Possible Encounter

Special Batfish, nudibranch, flat worm, Lobster, stonefish, mantis shrimp, Bottlenose dolphins, Bowmouth shark and guitar fish

Sharks White tip reef, Grey reef and Leopard

Rays Eagle Rays, Marble Stingrays, Jenkins stingrays

Eels Giant (Java), Honeycomb, Bearded (masked), zebra, white mouth, white eyes

Turtle Green & Hawksbill

Boat journey **80 minutes**



Christmas Rock

This is an exceptional dive site made of a small Thila shaped like a Christmas tree and positioned southwest of a lagoon. This site is highly exposed to the current despite the natural protection of the lagoon. That is why the Thila presents so many overhangs and such a specific architecture. The pinnacle stands on a sandy bottom at 25m and its small top reef is around 15m deep.

The Thila, which is covered with soft corals, hosts many schools of fish. On the lower parts, nurse sharks, white tip sharks and sting rays can be spotted with the occasional leopard shark. At the top of the Thila, divers can often spot tunas and trevallies hunting in the area as well as batfish welcoming you on the way to down.



Possible Encounter

Special	Angelfish, Batfish, Grouper, Black Snapper, Guitar Fish, Leopard Shark, Nurse Shark, Mantis. Octopus
Sharks	White tip reef, Grey reef and Leopard
Rays	Eagle Rays, Marble Stingrays, Jenkins stingrays, Mobula
Eels	White Eyed, White Mouth, Giant (Java), Honeycomb, Bearded (masked)
Turtle	Green & Hawksbill

Boat journey 70 minutes



Toshi

Edge of the reef located in the northern tip of Soneva Jani with 2 dive sites full of surprises.

Toshi Beyru is the outer reef on the ocean side. It is a sloppy coral reef going from 5 metres gently down to 30 metres. It is home to a multitude of reef fishes. It offers regular sighting of turtles, sting rays, eagle rays and nurse sharks. As a surprise, it is not uncommon to have dolphins coming over to say a little hello or some white tip sharks trying to escape your GoPro.

Toshi caves, situated in vertical wall section of the reef offer many hiding places for sting rays and nurse sharks. They will transform you from a scuba diver to an underwater buccaneer hunting for treasures. You may also find lobsters, nudibranchs, mantis shrimps and giant morays if you are a good explorer.



Possible Encounter

Special	Batfish, nudibranch, flat worm, Lobster, stonefish, mantis shrimp, Bottlenose dolphins
Sharks	White tip reef and Leopard
Rays	Eagle Rays, Marble Stingrays, Jenkins stingrays
Eels	Giant (Java), Honeycomb, Bearded (masked), White mouth, White eyes
Turtle	Green & Hawksbill



Boat journey 20 minutes

Raafushi

Raafushi Corner is dominated by beautiful yellow mesh corals and numerous overhangs which harbour morays and lobsters. If you look carefully, you may spot some nudibranchs. Grey reef sharks, barracudas and tunas can be seen passing by in the blue and it is a regular sighting to have stingrays relaxing on the sea bed.

Raafushi Reef present one of the denser population of small reef fishes and colours in the Noonu atoll, with many cracks and overhangs in the reef that serves as a home to sting rays and nurse sharks. Spend some time exploring the cracks and crevices on the side of the reef and you may encounter mantis shrimps, moray eels and the odd flatworms. Schools of fusiliers, banner fish and countless red tooth triggers can be seen along the reef, while tunas, napoleon wrasses, eagle rays and jack fish can be seen passing by in the blue.



Possible Encounter

Special	Batfish, nudibranch, flat worm, Lobster, mantis shrimp
Sharks	White tip reef and Leopard
Rays	Eagle Rays, Marble Stingrays
Eels	Giant (Java), white mouth, White eyes
Turtle	Green & Hawksbill

Boat journey 45 minutes



Kuredu

Kuredu Express is a Protected Marine Area with a very exciting channel to explore. This is just the right dive site for you if you would like to enjoy some descent drift diving. This long drift dive offers just about everything a diver would like to see in the Maldives. The overhangs are colourful on the sheer outside reef while on the eastern corner, the reef steps down with terraces and overhangs. The ceilings of the overhangs are covered with soft coral, an ideal hiding place for leaf fish. The kandu (channel) has small cavities on the side with plenty of moray eels, completed by large sting rays on the sandy bottom. Due to the current, this site is an ideal place to spot large tunas and for our delight, grey reef sharks, which are the main purpose of Kuredu Express.

Kuredu Caves is a site that could be compared with a turtle parking as there is an abundant population of green sea turtles leaving there. Distributed in a series of overhangs starting at 8 metres and dropping down to 20 metres. Stingrays can also be spotted on the sandy areas on the deeper ledges and big napoleon wrasses can also be seen cruising by.



Possible Encounter

Special Batfish, Tuna, Napoleon wrasse, barracuda, leaf fish, soldier fish, scorpion fish, porcupine fish, lion fish

Sharks Grey reef



Boat journey 100 min.

Manadhoo Corner

This is a 100,000 fish's reef with mesmerizing school of yellow and red snappers all along the slow sloping Reef. It is also the best place to spot Manta rays during the western monsoon coming over to Manadhoo for a descent spring-cleaning. Being on the edge of the Atoll, the current can be fairly strong from time to time although it is a dive site that will never let you down. White tip sharks, Napoleons wrasses, scorpion fish and so many big blocks of coral to explore on the top reef, that you would need more than one dive to snoop around and fulfil your curiosity.



Possible Encounter

Special	Large school of Yellow and red snapper, many parrot fish and Manta rays, Whale shark
Sharks	White tip reef, Whale shark
Rays	Eagle Rays, Marble Stingrays, Mobula
Eels	Giant (Java), Honeycomb
Turtle	Green & Hawksbill



Boat journey 35 minutes

Vattaru

Vattaru offers 2 completely different dives on the same long reef. Overall it is a sloping reef from 6 metres down to 30 metres.

Vattaru Reef starts from the middle of Vattaru Island, where you take a left shoulder dive toward the west corner and your first encounter will be a mega school of yellow snappers which is worth staying around for a while to get some descent GoPro shots. Keep drifting toward the corner and discover myriads of fishes, little caves, orange and purple anemones and the odd zebra shark.

Vattaru Corner is when you take it on a right shoulder. You will have a first 15 minutes that could seem a bit boring, although it is there that you may well spot eagle rays, sharks and for the deeper dives, some very large caves. Afterward, large coral blocks on the sandy bottom emerge with a huge life, a possible manta ray during the right season and to finish your last 20 minutes on the top reef in 3 to 7 metres of water around huge coral blocks and surrounded by all kind of fishes. A real aquarium!



Possible Encounter

Special

Angelfish, Batfish, Grouper, Black Snapper, Leopard Shark, Nurse Shark, Parrot fish, Octopus, Large school of yellow snapper, Manta ray



Boat journey 30 min.

Kandhoodoo

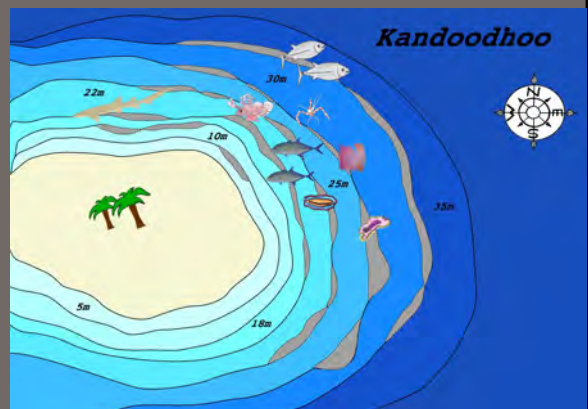
Kandoodoo is a lively site on the top reef with thousands of reef fishes of all colours and full of surprises on the way down the stairs. Composed of several platforms at different levels, there is many little overhangs, an accessible cave, a swim through and, each level presenting a difference fauna and flora.

On the top reef it tends to be smaller creature and as you go deeper, the size is increasing up to some white tip sharks or grey reef sharks cruising on the sandy bottom and tuna roaming in the blue



Possible Encounter

Special	Angelfish, Batfish, Grouper, Black Snapper, Guitar Fish, Leopard Shark, Nurse Shark, Mantis. Octopus, Barracuda, Grey reef shark
Sharks	White tip reef, Grey reef
Rays	Eagle Rays, Marble Stingrays, Jenkins stingrays
Eels	Giant (Java), Honeycomb, Bearded (masked)
Turtle	Green & Hawksbill



Boat journey 40 minutes

TOP 5 Animals in Maldives

There are some exceptional wildlife leaving in the Maldivian waters. If you try scuba diving or snorkelling in the Maldives, you should be made aware of them and if you are able to spot some of these admirable creatures, you will remember your holidays in paradise for a very long time.

Whale Shark

The largest fish in the World, the whale shark is by far the most popular animal in the Maldives. This extraordinary beast is one of the most beautiful creatures you can expect to find underwater. Gigantic, the whale shark can grow up to 40 meters and is characterised by a dark grey body, covered in white spots. You do not need to be a scuba diver to be able to see and swim alongside them. There are chances to see a whale shark once it is coming up to the surface to reheat its body and you would be able to snorkel with these forces of nature just a few meters away from you.



Manta Ray

The manta ray is unique by its sheer size and is the biggest in the ray family. The central disk of a manta can reach an impressive span of 7 or 8 metres for the giant Manta Birostris and 5 to 6 metres for the Manta Alfredi, which is the one you will be able to spot in the Maldivian waters. There are several scuba diving spots where manta rays would come to have their bodies and gills cleaned from parasites and on a great day, you could be lucky enough to assist at this wonderful show of grace while the manta is being pampered by small cleaner fish.

Both species are classified as “**vulnerable**” in the Red List of the International Union for Nature Conservation.



Grey Reef Shark

The grey reef shark has the typical "reef shark" shape, with a broad round snout and large eyes. They are fast-swimmers, agile predators that feed primarily on free-swimming bony fishes. Their aggressive demeanour enables them to dominate many other shark species on the reef despite their moderate size. The maximum reported length is 2.60 metres.



Moray Eel

Moray eels are part of a large family with over 200 species. The smaller one is the Snyder's moray with its huge 11cm in length. The longest one (4 metres) is the slender giant moray with the biggest one being the giant moray (Java moray) which is the one commonly seen in the Maldives and can reach length of 3 metres.

A strange behaviour of the giant moray is that she is courteously invited by some groupers to join them in a fishing hunt initiated by head shaking. The motivation behind this association is the ability of the morays to enter narrow crevices and flush the prey from niches that are not accessible to the groupers.



Turtle

The green sea turtle (*C. Mydas*), also known as the green turtle, black (sea) turtle or Pacific green turtle is the only species in the genus.

Like other sea turtles, green sea turtles migrate long distances between feeding grounds in order to lay eggs on beaches. Many islands worldwide and in the Maldives are known as Turtle Island due to green sea turtles nesting on their beaches. A green turtle can live in excess of 80 years in the wild.



Maldives Endangered Turtles



LOCAL NAME	COMMON NAME	SCIENTIFIC NAME
Velaa	Green Turtle	<i>Chelonia mydas</i>
Musinbee	Leather Back Turtle	<i>Dermochelys</i>
Vaavoshi velaa	Olive Ridley Turtle	<i>Lepidochelys olivacea</i>
Boabodu velaa	Loggerhead Turtle	<i>Caretta caretta</i>
Kahanbu	Hawksbill Turtle	<i>Eretmochelys imbricata</i>

Maldives Protected Species

Local Name
Common Name

Ihi
Lobster



Local Name
Common Name

Sangu
Triton



Local Name
Common Name

Maahulhubu landaa
Napoleon Wrasse



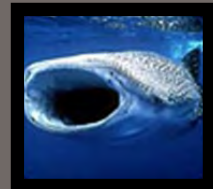
Local Name
Common Name

Koamas
Dolphin



Local Name
Common Name

Fehurihi
Whale shark



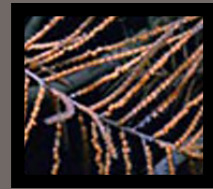
Local Name
Common Name

Bodumas
Whale



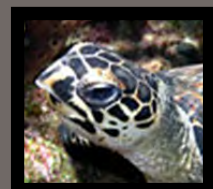
Local Name
Common Name

Endheri
Black coral



Local Name
Common Name

Vela / Kahanbu
Hawkbill & Green Turtle



Prohibited to Export

LOCAL NAME	COMMON NAME	SCIENTIFIC NAME
Landaa	Parrot fish	Scaridae
Sangu	Triton Shells	Charonia Tritonis
Ven	Eels	Anguilliformes
Ihi, ihi mas	Lobster & Lobster Meat	Nephropidae
Velaa kahanbu	Turtles & Products	Testudines
Hiri, Gaa, Muraka	All stony Corals excluding Organ Pipe Coral	Scleractinia
Mushimas	Bigeye Scads	Selar crumenophthalmus
Ithaa	Oysters Pearls	Pinctada margaritifera
Gonu fFoo Enburi	Trochus Shells	Trochoidea
Madi	Skates & Rays	Myliobatoidei
Koli	Puffer Fish	Tetraodontidae
En	Bait fish used in tuna pole and line fishing	
Endheri	Black Corals & by-products	Antipatharia
Koamas	Dolphins	Cetacea
Bodumas	Whale & Whale Sharks	Cetacea / Rhincodon
Gaahaka	Giant Clams	Tridacnidae